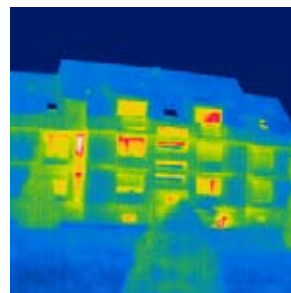
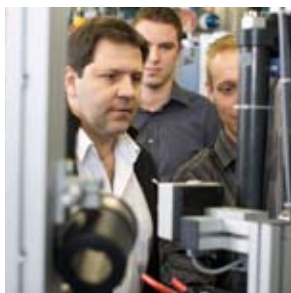


Positive energy building solutions

Pôle Alsace énergivie is a competitiveness cluster officially recognized by the French government to develop positive energy solutions for buildings.

The Pôle Alsace Energivie, towards positive energy construction



Join a dynamic organization. Join the Alsace Energivie program

In the beginning was the Alsace Energivie Program. Over ten years ago, the Alsace Energivie Program was initiated by the Alsace Region and ADEME, the French energy authority, in order to promote renewable energies. The Alsace Energivie Program **developed policy for supporting renewable energies and then energy efficiency**. The goals of this program are both environmental (reducing energy consumption and pollution) and economic (creating jobs). It is for this purpose that the Alsace Energivie competitiveness cluster was founded in 2006, **bringing together all of the region's key players in this sector**.

From cluster to Pôle Alsace Energivie

These economic development objectives were reinforced in October 2009 when Alsace Energivie applied for official recognition as a **technological competitiveness cluster**. On 11 May 2010, this recognition became official and the cluster became **Pôle Alsace Energivie**. Work started immediately, with an emphasis on R&D in complement to actions undertaken by the Alsace region and the ADEME within the framework of the Alsace Energivie Program.

Alsace Energivie Program

Coordinated by ADEME and the Alsace Region



- **Informing** energy consumers in Alsace and raising awareness among individuals, local authorities and building professionals.
- **Providing financial incentives and support** for low consumption, high-efficiency construction projects and integration of renewable energies.
- **Support** for tradesmen and building professionals through relations with their trade organizations.

Promotion of Low-Consumption Buildings and renewable energies

Pôle Alsace énergivie

Overseen by the Executive Board of the Alsace Energivie Association



- **Networking** of key economic players, including **businesses, educational institutions** and **research laboratories**
- Detection and support for **innovative** collaborative projects
- Support finding **financing**

Development of innovative solutions for positive energy buildings

The positive energy building is “just around the corner”



Why?

Planetary climate change issues and, more pragmatically, new environmental regulations are leading professionals to rapidly develop processes, materials and technologies which will allow us to design, build and manage buildings in a completely new way.

En 2011, Low Energy Consumption Building becomes mandatory for local governments in France. This will be mandatory for everyone by January 2013. The next steps will be passive buildings as of 2017 and then positive energy in 2020.

Who?

Pôle Alsace énérgivie is already at work helping industry and building professionals to meet these fast-approaching deadlines.

Four month after certification as a competitiveness cluster, le Pôle Alsace Energivie already has **75 members, including industrial groups, SMB, schools, universities, research labs and professional organizations.**

What we do

Our approach is applied to residential buildings, industrial and service sites, business parks, and urban sites. We are concerned both with new construction and renovation.

We run **working groups (see back) and set up networks of expertise and develop training tools to enable each building trade to provide innovative solutions.**

How?

Pôle Alsace Energivie detects, formalizes and supports **innovative projects managed by member companies and research labs to help them find adequate financing to start up their projects.**

Becoming a member of Pôle Alsace Energivie gives you the tools to make the energy transition a success for your organization. Let's work together!

“

A building or site is described as “positive energy” if consumes comparatively little energy and if the energy is produced onsite, thanks to renewable energies, is greater than that consumed (regardless of use) on average over the year. In addition, the architecture of positive energy buildings must allow them to blend in harmoniously with the town. They must provide users with an interior environment that is safe, healthy, comfortable and promotes eco-responsible behaviour. Finally, for a positive energy building to contribute to global energy savings, it must require comparatively little energy to build and its location should require relatively little energy to transport its users.

”

(source: PREBAT report entitled Vers des bâtiments à énergie positive, proposition de structuration des actions de recherches, published in June 2009)

How Pôle Alsace énergivie is organized

Pôle Alsace Energivie is set up to be as reactive as possible. It is inspired by the best practices of other French competitiveness clusters. For this reason, the industrial college holds half of the voices on the Board.

Is your business involved in one of the areas listed below?

Then you may be eligible to **join Pôle Alsace Energivie**, attend our workshops, offer your input and benefit from the dynamics of our organization.

This collaborative work can contribute to the success of your R&D projects.

Contact us for a membership application or download it from: <http://pole.energivie.eu>

Areas concerned by the developments of positive energy buildings.

- > building envelope systems
- > industrialization of construction processes
- > composite construction materials based on recycled or biomass materials
- > multi-material assemblies
- > processes for forming innovative materials
- > new surface treatment procedures
- > structured nano materials and nano composites
- > recycling of specific materials
- > functionalization of materials
- > lair management in the building
- > low-temperature heat regulation
- > heat recovery
- > regulation systems
- > high-performance low-power heating systems
- > renewable energy integration technologies in buildings
- > intelligent sensors and signal processing
- > solar power, wind power and cogeneration systems
- > electronic and measurement equipment
- > photonic systems and processes
- > network and power control
- > information and communication technologies



Working groups

5 operational themes

- > Building design
- > Envelope, including materials
- > Energy supply
- > Control
- > Startup

5 transversal themes

- > Eco-neighborhoods
- > Life cycle
- > Building renovation
- > Standards and qualification
- > Training and human capital

Members of the Executive Board

Mr Pierre-Etienne BINDSCHIEDLER

Chairman of the Board of Directors of SOPREMA

Mr Philippe BACH

Director of the École Nationale Supérieure d'Architecture de Strasbourg

Mr Frédéric BARON

Director of the EIFER Institut

Mr Bertrand FRITSCH

Regional Council of the Ordre des Architectes d'Alsace

Mr Didier GUENIN

Managing Director of ES,
Regional Delegate of EDF

Mr Dominique HENNERESSE

President of Fidelys Conseil

Mr Jean-Marc JELTSCH

Vice-President of the University of Strasbourg

Mr Etienne LEROI

Managing Director of N. Schlumberger

Mr Frank MATHIS

President of MATHIS S.A.

Mr Marc RENNER

Director of the Institut National des Sciences Appliquées de Strasbourg (INSA)

Monsieur Bernard Schott

Managing Director of Hager Controls SAS

Mr Jean-Pierre TALAMONA

President of the Fédération Française du Bâtiment Alsace

Supporting Pôle Alsace Energivie



Contact: Pôle Alsace Energivie - 6 rue Oberlin - 67000 STRASBOURG - FRANCE

Tel.: +33 (0)370 299 800 - Fax: +33 (0)370 299 809 - contact@pole.energivie.eu - <http://pole.energivie.eu>